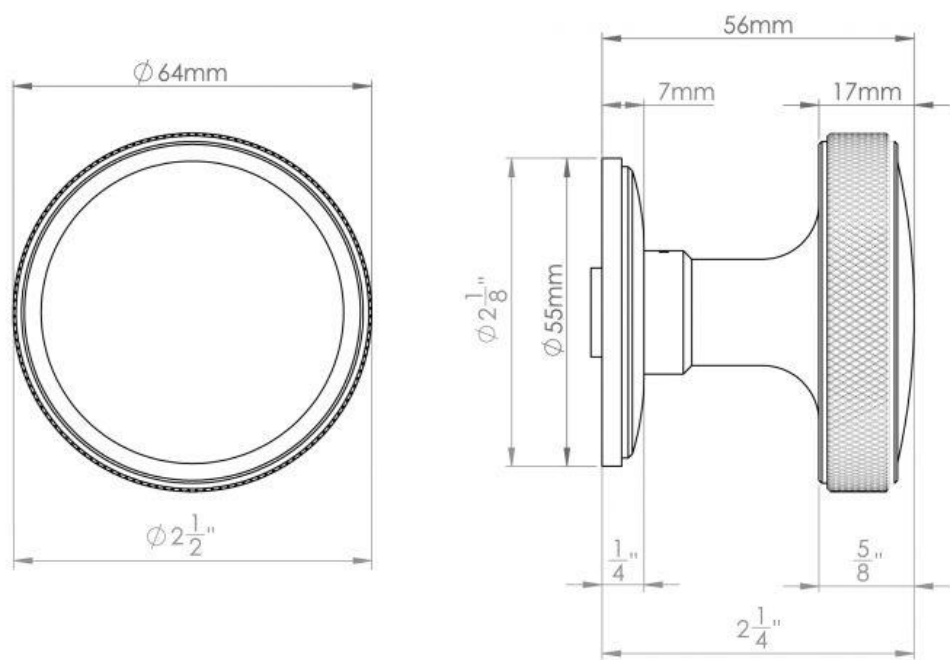


Argyle Door Knob on a Concealed Rose

Code - D5289



A two part concealed fixed rose throughout, with 3 x Wood Screws and 2 x 38mm Centre M4 Bolt through Fixings.

All knobs referenced within this document are un-sprung. Knobs are attached via a grub screw to Boat spindle for added strength.

All imperial dimensions are rounded to the nearest 1/8".

Recommended to work with the Imperial Lock G4060 Tubular Latch (specify lightly sprung option). Ensure accurate fitting when working with lightly sprung latches.

Available finishes and patinas



AN

CP

DBMA

DAN

IBMA

PRL

PB

PBUL

PN

SB

SCP

SNP

SMK