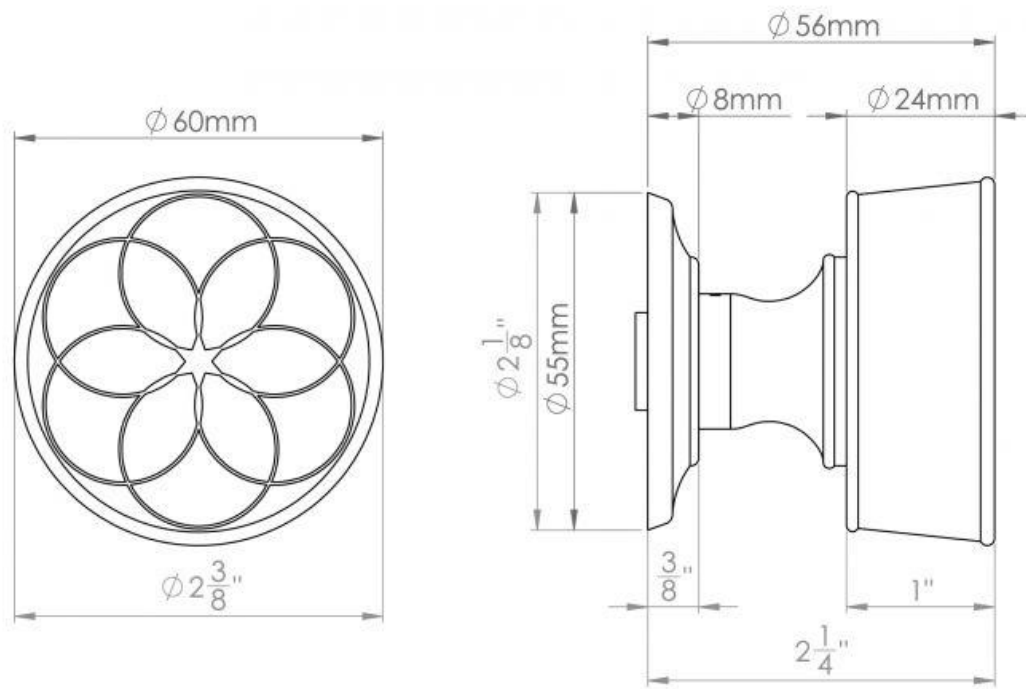


# Geo Door Knob on a Concealed Rose

Code - D5306



A two part concealed fixed rose throughout, with 3 x Wood Screws and 2 x 38mm Centre M4 Bolt through Fixings.

All knobs referenced within this document are un-sprung. Knobs are attached via a grub screw to Boat spindle for added strength.

All imperial dimensions are rounded to the nearest 1/8".

Recommended to work with the Imperial Lock G4060 Tubular Latch (specify lightly sprung option). Ensure accurate fitting when working with lightly sprung latches.

Available finishes and patinas

