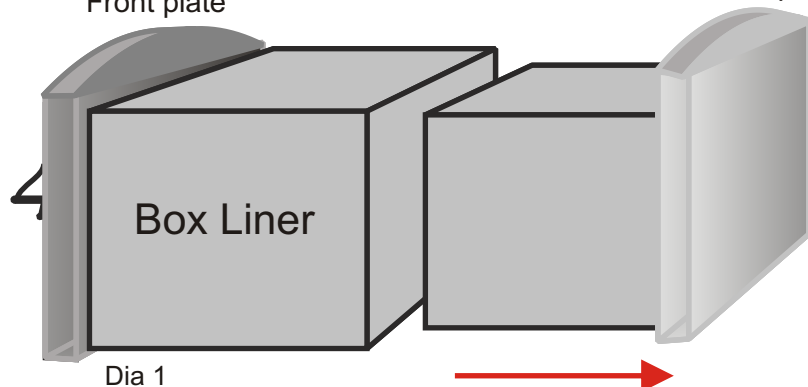


Post Box Installation Instructions

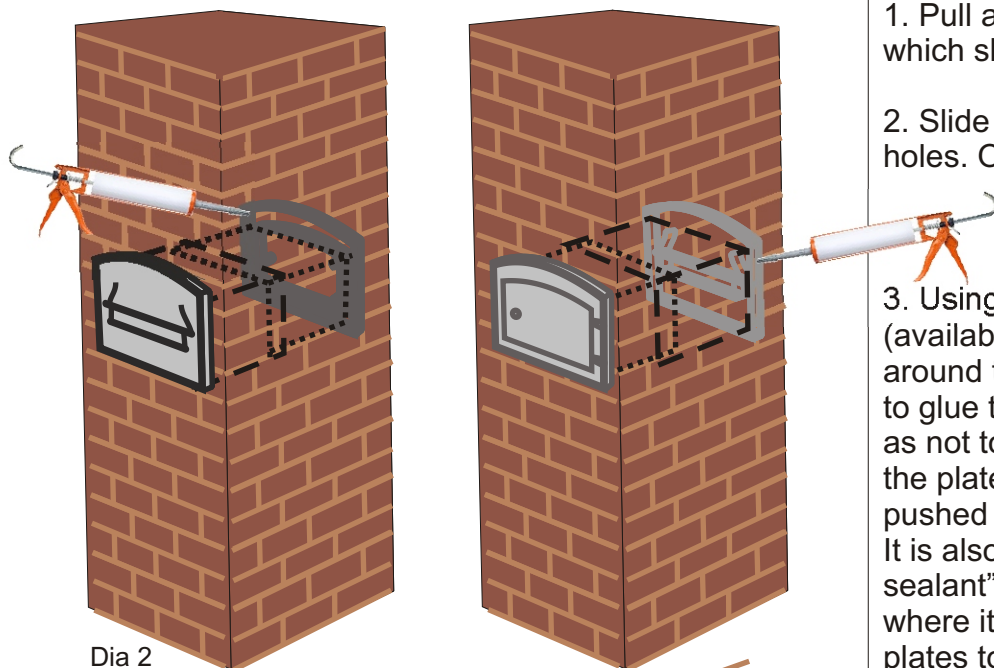
Front plate

Back door plate



We recommend the assistance of a professional builder with the installation of your new post box.

The post box is designed to be permanently fixed into a wall or gate pillar cavity. The wall must be constructed with an appropriate sized hole to accommodate the post box liner. The hole should NOT be larger than the front or back door plates.



1. Pull apart the 2 halves of the post box, which slide into each other, as in diagram 1

2. Slide each half into position in the wall holes. One from each side accordingly.

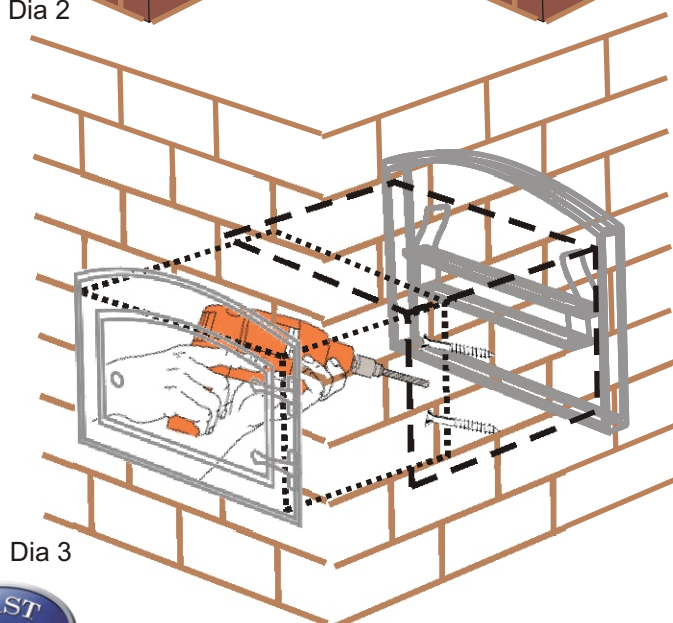
The liner boxes should slide back into each other. See Diagram 2

3. Using some masonry sealer glue (available from all DIY stores), run the glue around the back of the front and back plates to glue them to the brick work. Be careful so as not to let the glue ooze from the side of the plates and become unsightly once it is pushed into position.

It is also worth running some "Silicone sealant" around the inside of the liner box where it connects to the front and back plates to create a water tight joint and prevent water ingress into the inside of the box.

4. With the post box now in position in the wall you can fully secure it by opening the back door to gain access to the inside of the box, and drill fixing holes through the inner liner where they overlap, and using screws, screw the liners to the inner brickwork. This will fully "lock" the box to the wall and will prevent the 2 halves from being "pulled" apart making it totally secure.

Dia 2



Dia 3

General maintenance and care.

Your post box is coated in a tough powder coating, but moving parts on the hinges are susceptible to corrosion over time. The joints in the post box have already been oiled to prevent corrosion, but it is worth re-oiling these joints every year to keep them in good condition.

If the powder coating is chipped or scratched you can use a MATT black enamel based paint (such as smooth hammerite) to touch up any exposed metal and prevent corrosion.



CAST IN STYLE

The Granary, Long Lane,
Shifnal,
Shropshire
TF11 8PL
UK
Phone 0800 009 6233
International : +44 1902 375111
support@castinstyle.co.uk
www.castinstyle.co.uk

Cast in Style co Limited is a company
registered in England and Wales

